

RI Land Trust Days – Scituate LT Bat Talk & Walk at Lawton Farm

Scituate Land Trust & Conservation Commission invite you to a Bat Talk & Walk at **Lawton Farm!**

Join us Tuesday, **August 16th at 7:30 pm** for a walk and talk about bats! What are the benefits of bats? What special adaptations do they have, and how can we protect these special mammals? These are just some of the questions that will be answered by University of Rhode Island professor, Dr. Peter August.



Have you ever heard a bat talk? Bats are indeed chatty creatures, but our ears can't hear them — unless, of course, we use a super special “bat detector.” This device picks up the bats’ “clicks” used in echolocation. During our summer Bat Walk and Talk program, we'll use the bat detector to hopefully locate bats and follow their movements.

Dr. August is a Professor in the URI Department of Natural Resources Science where he teaches classes in geographic information systems and landscape ecology. He has studied bats in New England, the Caribbean, and South America.

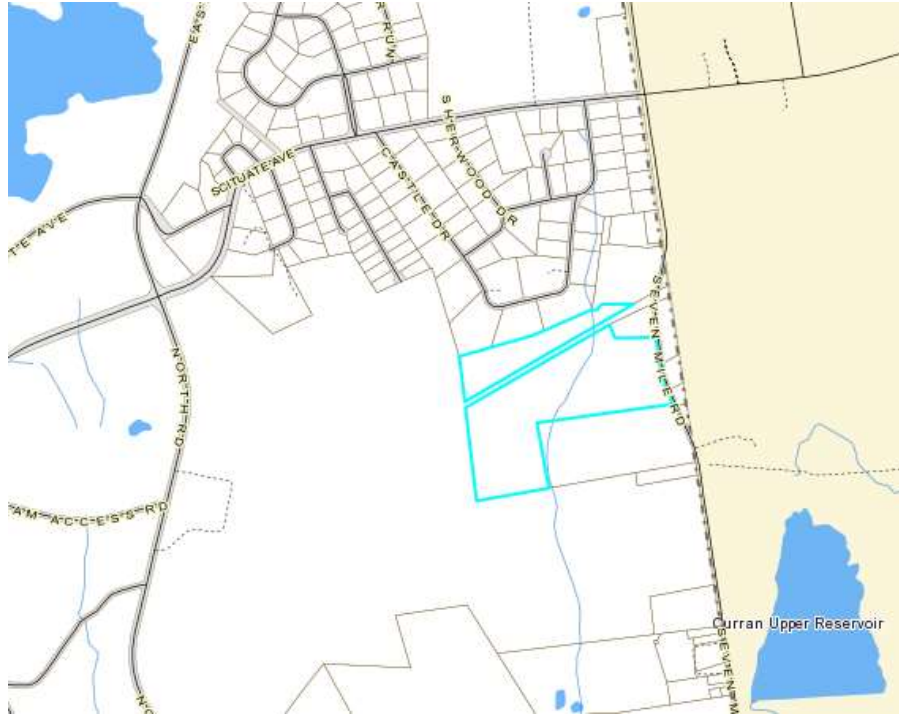
No reservations are required for this free event. Cancellation (if any due to rain) will be announced on the RI Land Trust Days website and Meetup pages.

Questions: Contact Sue Scanlon at suescanlon@yahoo.com

For more information visit the Scituate Land Trust website:
<http://www.scituateriltcc.org/>

Directions: From Scituate Avenue (Rt. 12), head south on Seven Mile Road 6/10 of a mile to the Lawton Farm entrance on the west (right) side of the road. Follow dirt entrance road to the end for parking.

(Adjacent to 512 Seven Mile Rd.)



Directions from the South:

- Take I-295 N to RI-14 W/Plainfield Pike in Cranston - exit 4
- Turn left onto RI-14 W/Plainfield Pike
- Turn left onto Comstock Pkwy (CVS on right)
- Turn right onto Scituate Ave Rt. 12 (first light)
- Turn left onto Seven Mile Rd. (about 2 miles at flashing light)

Directions from Providence:

- Take US-6 W
- Merge onto I-295 S
- Take exit 4 to merge onto RI-14 W (right turn off exit)
- Turn left onto Comstock Pkwy (CVS on right)
- Turn right onto Scituate Ave Rt. 12 (first light)
- Turn left onto Seven Mile Rd. (about 2 miles at flashing light)